



# KCPSS SEC 2 ENGAGEMENT SESSION 2024

15 February 2024



Kuo Chuan Presbyterian Secondary School



# About Kuo Chuan Presbyterian Secondary School

*Kuo Chuan Presbyterian Secondary School is a co-educational government-aided secondary school located in Bishan.*

## Our Mission and Vision

### School Mission

*With God as our guide, we nurture students who learn with confidence, excel with grace, lead with passion and serve with purpose in our communities*

### School Vision

*A School on A Hill, shining a light for all*



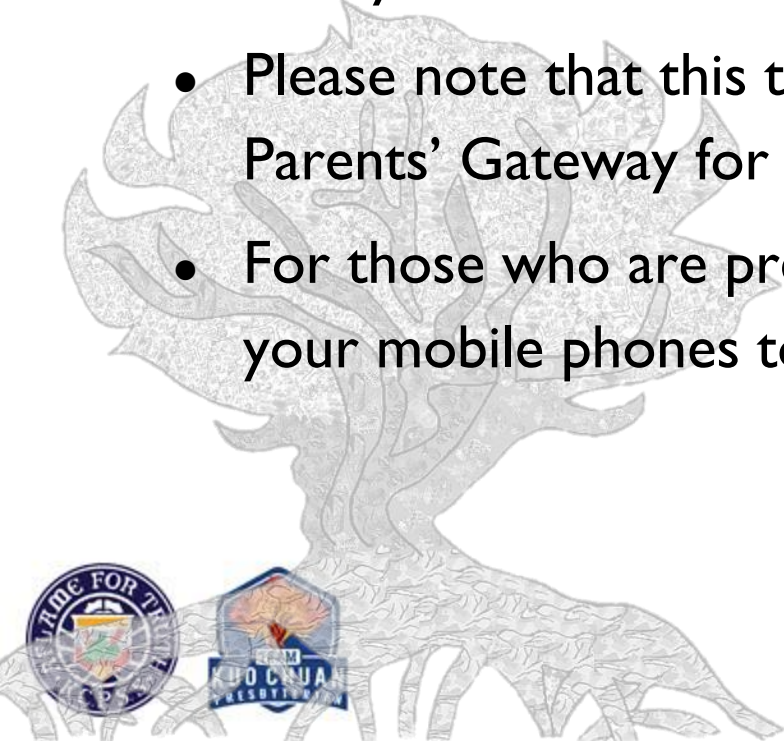
Kuo Chuan Presbyterian Secondary School



# Some Housekeeping Matters



- Today's session is for Sec 2 parents
- Please note that this talk will be recorded and shared on Parents' Gateway for those who may have missed it.
- For those who are present here in person, kindly switch your mobile phones to silent mode.



Kuo Chuan Presbyterian Secondary School



# Overview of Programme



Welcome

Principal's time

What to expect in 2024

Subject Options

Education & Career Guidance

Q & A



Kuo Chuan Presbyterian Secondary School



# Welcome



- Mr Justin Tan, Principal
- Mrs. Esther Chee, Vice-Principal
- Ms Jamie Yee, Vice-Principal (Admin)
- Mr Tan Say Pin, HOD/CCE
- Ms Michelle Cheong, HOD/ICT
- Mr Patrick Goh, Year Head/LS
- Ms Ho Shiao Hwee, Assistant Year Head/Lower Sec
- All HODs



# Navigating Sec 2



- Starting the year right
- Sustaining good momentum
- Supporting your child



Kuo Chuan Presbyterian Secondary School



# Starting the Year Right



- Provide **healthy support** for your child as he/she makes a transition to new experiences
- Be open to **new types** of learning and challenges that your child will face
- Encourage your child to take **ownership** of challenges and to grow by overcoming them with the support of peers and teachers





# Sustaining the Momentum



- Engage your child to **stay updated** about his/her learning and growth
- **Learn more** about educational pathways and the changing economy
- Use opportunities to **support** your child's learning in different areas



Kuo Chuan Presbyterian Secondary School



# Supporting Your Child



- Tune into your child's progress and learning by **listening** and **observing**
- **Work with** your child's teachers and the school to understand what's new
- Give our partnership **time, space and respect** so that we can do what's best for your child and you



# *What to expect in 2024?*

**Ms Ho Shiao Hwee**  
**Assistant Year Head/ Lower Sec**



# Growing our KCPians



Secondary 1

Grow with  
GRACE

Secondary 2

Connect with  
GRACE

Secondary 3

Shine with  
GRACE

Secondary 4/5

Excel with  
GRACE

**G . R . A . C . E .**

**God-Fearing . Resilience . Agape . Conscientiousness . Empathy**



Kuo Chuan Presbyterian Secondary School



# Supporting Your Child Through Sec 2



Key changes	Skills required
<ul style="list-style-type: none"><li>● Balancing multiple and greater intensity of commitments</li><li>● Managing peer influence</li><li>● Being a senior to the Sec 1s / more leadership opportunities</li><li>● Figuring out what subjects to take in Sec 3</li></ul>	<ul style="list-style-type: none"><li>● Responsible Decision-making</li><li>● Time management</li><li>● Emotional/Stress management</li><li>● Learning to work in teams &amp; leading others</li></ul>



# Understanding and Supporting Our KCPians



1. **School Support:** Level FTs, Year Heads, HODs, School Counsellor, SEN Officer working as a team
2. **Conversations with Form Teachers**
3. **Peer Support:**
  - Class Committee (including KCP Befrienders)
  - Cohort-based Activities (for bonding and learning together)



# Our Sec 2 Form Teacher Team



**2 Faith**  
Mr Foo Seng Hong



**2 Joy**  
Ms Rachel Lee



**2 Love**  
Ms Rebecca Kang



**2 Peace**  
Mr Edwin Tan



Kuo Chuan Presbyterian Secondary School



# Our Sec 2 Form Teacher Team



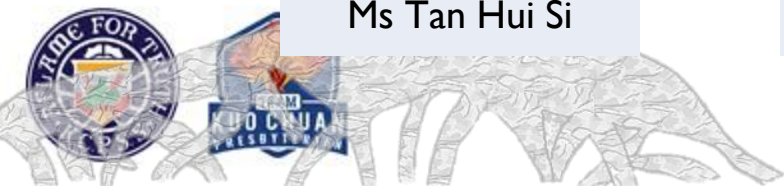
**2 Grace**  
Ms Tan Hui Si



**2 Hope**  
Mrs Esther Tay



**2 Praise**  
Mr Samuel Chan





# Opportunities to Lead & Serve



- Variety of leadership platforms

Platform	Specific Leadership Roles
School-wide	Student Leadership Board (SLB)
CCA	Lower Sec in-charge
Class	Monitors, Assistant Class Monitors, Class Committee Members, Subject Representatives



# Opportunities to Lead & Serve



## Values-in-Action (VIA) Theme: Developing a Service Heart for the Elderly

- Class-based activities to work with assigned beneficiaries
- From understanding the current efforts to promoting social awareness among peers on relevant social issues in Singapore



Kuo Chuan Presbyterian Secondary School



# How do we help our students flourish?

## Building a Growth Mindset



## Cultivating Gratitude



## Setting Goals



Kuo Chuan



# Student's Sharing of Her Sec 2 Journey



## Sharing by KCPian Megan Jolie Tan



Kuo Chuan Presbyterian Secondary School





# National Day Parade 2023



# Spin Doctors





## VIA programme



# *Subject Options for 2024*

**Ms Michelle Cheong**  
**HOD ICT**



Kuo Chuan Presbyterian Secondary School





# Academic Endeavour



- Secondary 3 sets the foundation for post-secondary pathways.
- In supporting your child in their decision to choose the subjects, it is important to engage them in conversation of the possible career options they wish to pursue in future.



Kuo Chuan Presbyterian Secondary School



# New Subjects in Upper Sec



- Your child/ward may be unfamiliar with several new subjects that were not offered in lower sec.
- These include Additional Mathematics, Principles of Accounts, Chemistry, Biology, Physics, Combined Humanities (SS/Geo) and (SS/His)
- We have included some FAQs to help you and your child plan ahead!

## Subject Brief

- Principles of Accounts
- Additional Mathematics
- Chemistry
- Biology
- Physics
- Combined Humanities



Kuo Chuan Presbyterian Secondary School



# Principles of Accounts - What is it?



- Recording and processing of business transactions
- Evaluate business performance and facilitate decision-making
- **Age-appropriate** and **relevant accounting knowledge**, skills and values.
- How businesses use accounting and non-accounting information to make decisions



# Additional Mathematics - What is it?



- Together and on par with “Pure Science”
- Algebra, Geometry & Trigonometry and Calculus
- Requires a **strong foundation** in
  - Algebraic manipulation and
  - Mathematical Reasoning
- Conceptual understanding, process skills such as reasoning, communication and connections, thinking skills, and applications
- Link across many topics and may be abstract



# FAQ: Does my child need A-Math to get into JC or poly?



## Junior Colleges (JC)

- Can be considered as one of the LIR5 subjects for admission
- Generally, JCs prefer students to have A Math in order to take H2 Math
- Do not need A Math to take up H1 Math in JC

## Polytechnic

- A Math can be included as one of two Relevant Subjects for ELR2B2 (Need only one Mathematics Subject – can be either Mathematics or A Math)
- A Math is NOT compulsory for all Poly Courses, including Engineering.



# Chemistry - What is it?



- It is the study of matter, its composition, properties and reactivity.
- All students will study chemistry either Science (Chemistry) or Chemistry. Science (Chemistry) is a combined science subject taken with Science (Physics) or Science (Biology)

PERIODIC TABLE OF THE ELEMENTS

A standard periodic table of elements, color-coded by groups. The legend includes: Other nonmetals (yellow), Halogens (blue), Noble gases (purple), Alkali metals (orange), Alkaline earth metals (light orange), Carbonoids (pink), Chalcogens (light green), Transition metals (green), and Metalloids (light blue). The table shows elements from Hydrogen (H) to Oganesson (Og).

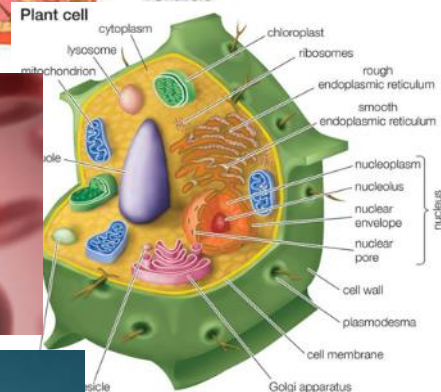
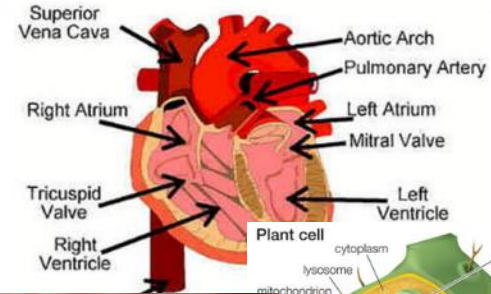
1	2	Group 1-10										18	19	20				
H	He											Ar	K	Ca				
Li	Be	Group 11-18										B	C	N	O	F	Ne	
Na	Mg											Al	Si	P	S	Cl	Ar	
K	Ca	Sc	Ti	V	Cr	Mn	Fe	Co	Ni	Cu	Zn	Ga	Ge	As	Se	Br	Kr	
Rb	Sr	Y	Zr	Nb	Mo	Tc	Ru	Rh	Pd	Ag	Cd	In	Sn	Sb	Te	I	Xe	
Fr	Ra	La-Lu		Hf	Ta	W	Re	Os	Ir	Pt	Au	Hg	Tl	Pb	Bi	Po	At	Rn
		Ac-Lr		Rf	Db	Sg	Bh	Hs	Mt	Uun	Uuu	Uub	Uut	Uuq	Uup	Uuh	Uug	Uuo
		La	Ce	Pr	Nd	Pm	Sm	Eu	Gd	Tb	Dy	Ho	Er	Tm	Yb	Lu		
		Ac	Th	Pa	U	Np	Pu	Am	Cm	Bk	Cf	Es	Fm	Md	No	Lr		



# Biology - What is it?

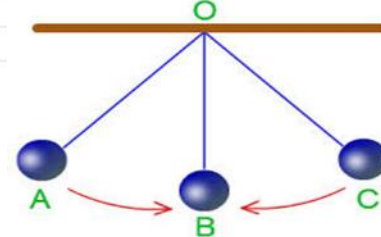
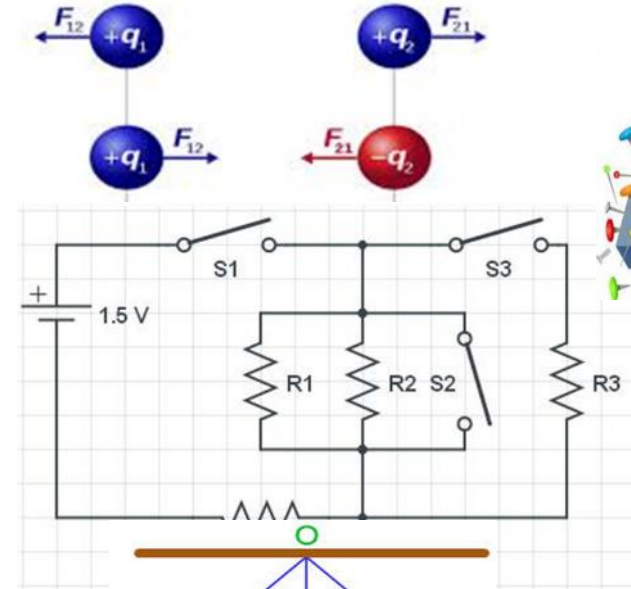


- Biology is a natural science concerned with the study of life and living organisms, including their structure, function, growth, evolution, distribution, identification and taxonomy.
- Students usually enjoy studying biology because they find it very interesting and relatable, because biology is about living things.



# Physics - What is it?

- Physics the study of matter and its motion and behaviour through space and time, along with related concepts such as energy and force.
- Many students chose physics because of its application to engineering courses in tertiary education





# FAQ: Does my child need Pure Science to get into JC or poly?



## Junior Colleges (JC)

- Pure Science is not a requirement for entrance to JC. However in order to offer H2 Sciences, a distinction (A1/A2) is required for combined science.
- JC students do not offer triple H2 Sciences as they require a contrasting subject at H2 or H1 level. Biology is not compulsory in order to take up Medicine in University.



# FAQ: Does my child need Pure Science to get into JC or poly?



## Polytechnic

- Science (Pure or Combined) can be included as one of two Relevant Subjects for ELR2B2 (Need only one Mathematics or Science Subject)
- Physics is not compulsory for all Polytechnic Engineering Courses



# Humanities - What is it?

Humanities is the branch of knowledge associated with the relationship between humans and their culture/history, humans and their environment and humans with other humans in relation to their society.

Combined Humanities is a single subject comprising Social Studies (SS) and elective History, Geography or Literature. SS is a new subject for the students as it is not offered in the Lower Secondary level. For SS the focus is on Singapore and its relationship with the world.

Geography



History

SELECT YOUR  
WWII LEADER



Social Studies



Kuo Chuan Presbyterian Secondary School

# FAQ: Is it better to take SS+Hist or SS+Geog? What should my child consider?



- First and foremost the interest of the child is paramount in the decision making.
- We need to consider the aptitude of the child in relation to choosing between learning Geography versus learning History.
- For SS and History the assessment is similar so if your child has a flair for source-based questions, then learning History would be beneficial.



Kuo Chuan Presbyterian Secondary School

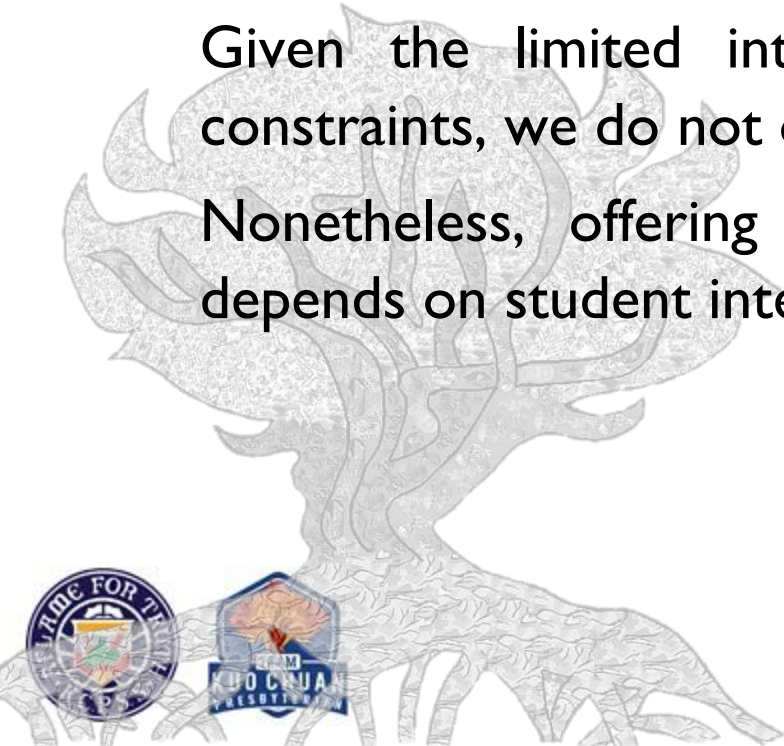


# FAQ: Will Pure History or Pure Geography be offered?



Given the limited interest from students and resource constraints, we do not offer Pure History or Geography.

Nonetheless, offering these subjects in the near future depends on student interest and availability of resources.



Kuo Chuan Presbyterian Secondary School



# How should I choose my subjects?



**Interest and passion for the subject**

**Relevance to future areas of learning**

**Aptitude**



Kuo Chuan Presbyterian Secondary School



# Approach for Subject Allocation



Allocation of subjects are based on merit, student choice and availability of school resources.

Using the Sec 2 overall results, students will be allocated their preferred subjects:

- If they meet the subject criteria
- In the order of preference of subjects indicated
- If there is a sizeable demand of the subject (that is 15 or more students)



# G3 Posting Group



All students will offer a minimum of 7 Subjects from various disciplines.

Students who have met the criteria will be offered the optional 8th Subject.

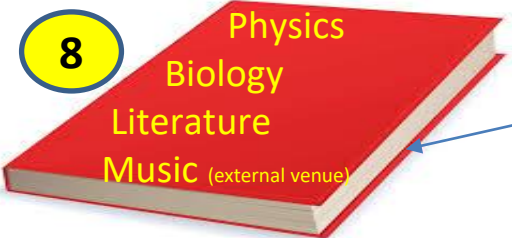
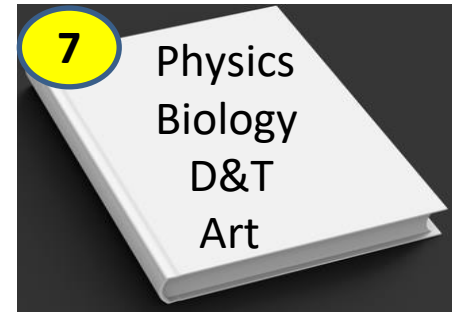
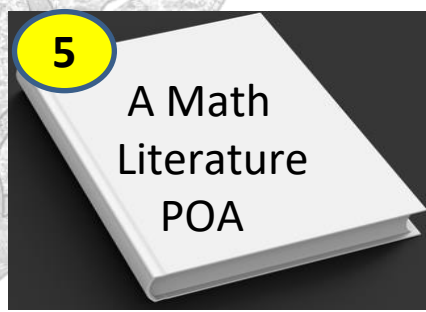
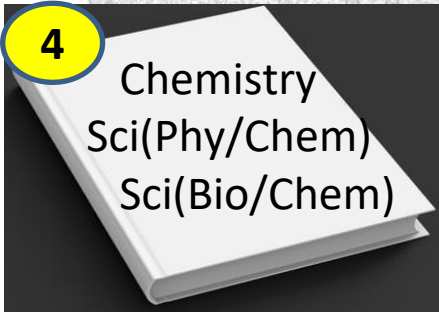
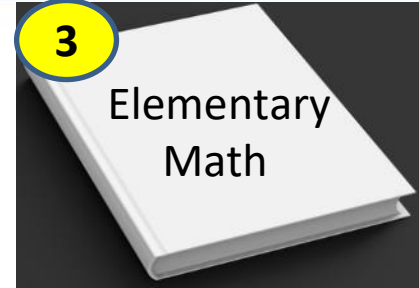
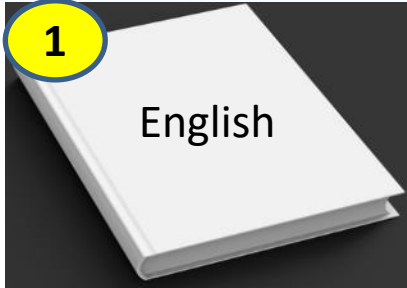


Kuo Chuan Presbyterian Secondary School





# Subject Criteria (G3)



OPTIONAL  
8<sup>th</sup>  
Subject

\*A Math and Literature may be taken at less demanding level (this is interest-based and will not be computed into post-secondary admissions)



# Subject Criteria (G3)



Subject	Criteria
Higher Mother Tongue	Overall $\geq 70\%$ Sec 2E Mother Tongue $\geq 80\%$
Pure Science	Sec 2E Science $\geq 60\%$
Additional Mathematics	Sec 2E Mathematics $\geq 60\%$
Literature	Sec 2E Literature $\geq 65\%$

*Students who do not meet the criteria for A Math and Literature, These two subjects can be offered at a less demanding level (exposure and interest)*

# Subject Criteria (G3)

## Criteria for offering optional 8<sup>th</sup> subject (Literature or Pure Biology/Pure Physics)

<b>Criteria 1</b>	Sec 2E Overall $\geq$ 70%	
<b>Criteria 2</b>	Literature	Pure Biology / Pure Physics
	Sec 2E Literature $\geq$ 65%	Sec 2E Science $\geq$ 70%



# G2 Posting Group



All students will offer a minimum of 6 Subjects from various disciplines.

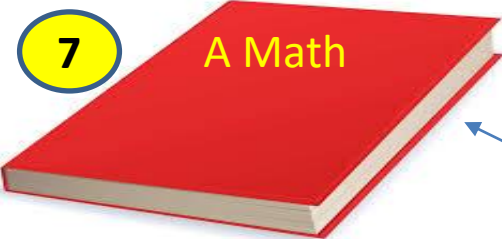
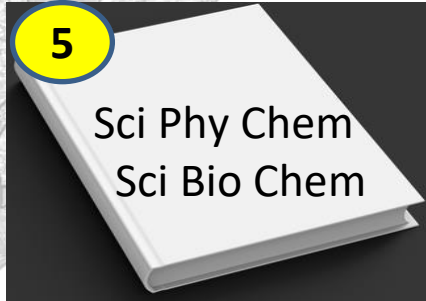
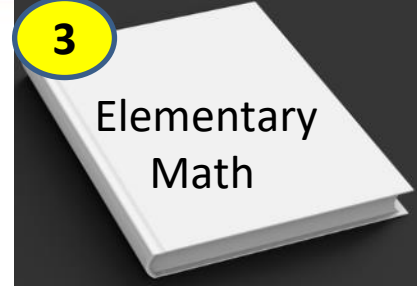
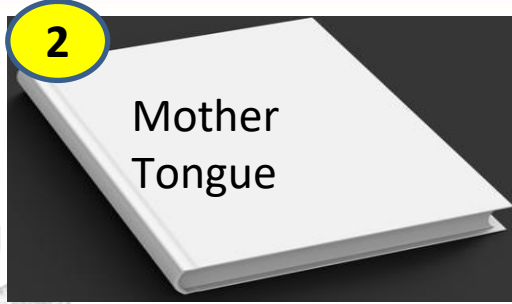
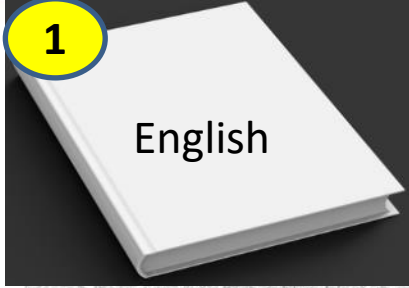
SBB students will offer some subjects at a more demanding level.



Kuo Chuan Presbyterian Secondary School



# G2 Posting Group



OPTIONAL  
7<sup>th</sup>  
Subject



Kuo Chuan Presbyterian Secondary School



# Subject Criteria (G2)

## Specific Subject Criteria

Subject	Criteria
O Level Mother Tongue	Sec 2N Mother Tongue $\geq$ 75%
O Level Art	Sec 2N Art $\geq$ 75%
O Level D&T	Sec 2N D&T $\geq$ 75%



# Subject Criteria (G2)



## Criteria for offering optional 7<sup>th</sup> subject (Additional Mathematics)

**Criteria 1**

Sec 2N Overall  $\geq 65\%$

**Criteria 2**

Sec 2N Mathematics  $\geq 60\%$



Kuo Chuan Presbyterian Secondary School



# Subject Based Banding (SBB)



For N-Level students offering O-Level subjects (SBB), their grades will be converted to the N(A)-Level grades for admission to Poly Foundation Programme (PFP)

GCE 'O' Level Grade	GCE 'N' Level Grade
A1 – B 3	1
B4 – C6	2
D7	3





# Progression Opportunities After N Levels



- Sec 4 (G2) students have the following progression opportunities:



**Direct-Entry-Scheme  
to Polytechnic  
Programme (DPP)**



**Polytechnic  
Foundation  
Programme (PFP)**



**Nitec Programmes**



**Secondary 5 N(A)**

- Students must satisfy the minimum entry requirements.
- A strong literacy and numeracy foundation would ensure students are better prepared for these progression pathways.
- Therefore, students are encouraged to deepen their knowledge in **English, Mathematics and Science.**

# Subject Allocation Timelines



Month	Item
February	Briefing for parents
May	Sec 2 Subject Taster 2024
August	Briefing for students
October	Submission of subject preferences after examination results
November	Release of subject allocation results



# FAQ: What is the criteria for promotion or lateral transfer?



## Promotion Criteria for Sec 2 G3

### Sec 2 G3

#### Criteria for Promotion

Pass English and score at least 50% in overall average

#### Meet criteria

Promoted to Sec 3 G3

#### Do not meet criteria

Transferred to Sec 3 G2

## Promotion Criteria for Sec 2 G2

### Sec 2 G2

#### Criteria for Promotion

Pass English and two subjects OR pass four subjects

#### Meet criteria

Promoted to Sec 3 G2

OR

Lateral transfer to Sec 3 G3

If overall average  $\geq 70\%$

#### Do not meet criteria

Retained in Sec 2 G2

The MOE criteria for promotion and lateral transfer is stated in our KCPSS student handbook page 62.



Kuo Chuan Presbyterian Secondary School



# Contact us for further enquiries



**Ms Michelle Cheong**

(cheong\_mun\_mun\_michelle@schools.gov.sg)

**Mdm Png Siew Hoon**

(png\_siew\_hoon@schools.gov.sg)



Kuo Chuan Presbyterian Secondary School



# Supporting Your Child's ECG Journey



## Education and Career Guidance

**Mr Tan Say Pin**  
**HOD CCE**



Kuo Chuan Presbyterian Secondary School



# Objectives



**By the end of this sharing, you should be able to:**

- **Awareness** of post-secondary education pathways
- **Empowerment** in your conversations with your child about post-secondary education choices



Kuo Chuan Presbyterian Secondary School



# 3 ECG Questions



Where Do I  
Want To Go?

- Explore possible Courses & Careers

Where Do I  
Want To Go?  
**Exploring  
Opportunities**

- Know yourself and the world around you better

Who am I?

Who Am I?  
**Discovering  
Purpose**

- Decide on further education options

How do I get  
there?

How Do I Get There?  
**Staying  
Relevant**

- Understand your child as an individual
- Enable your child to explore viable education and career options, and make plans
- Pathways towards that goal

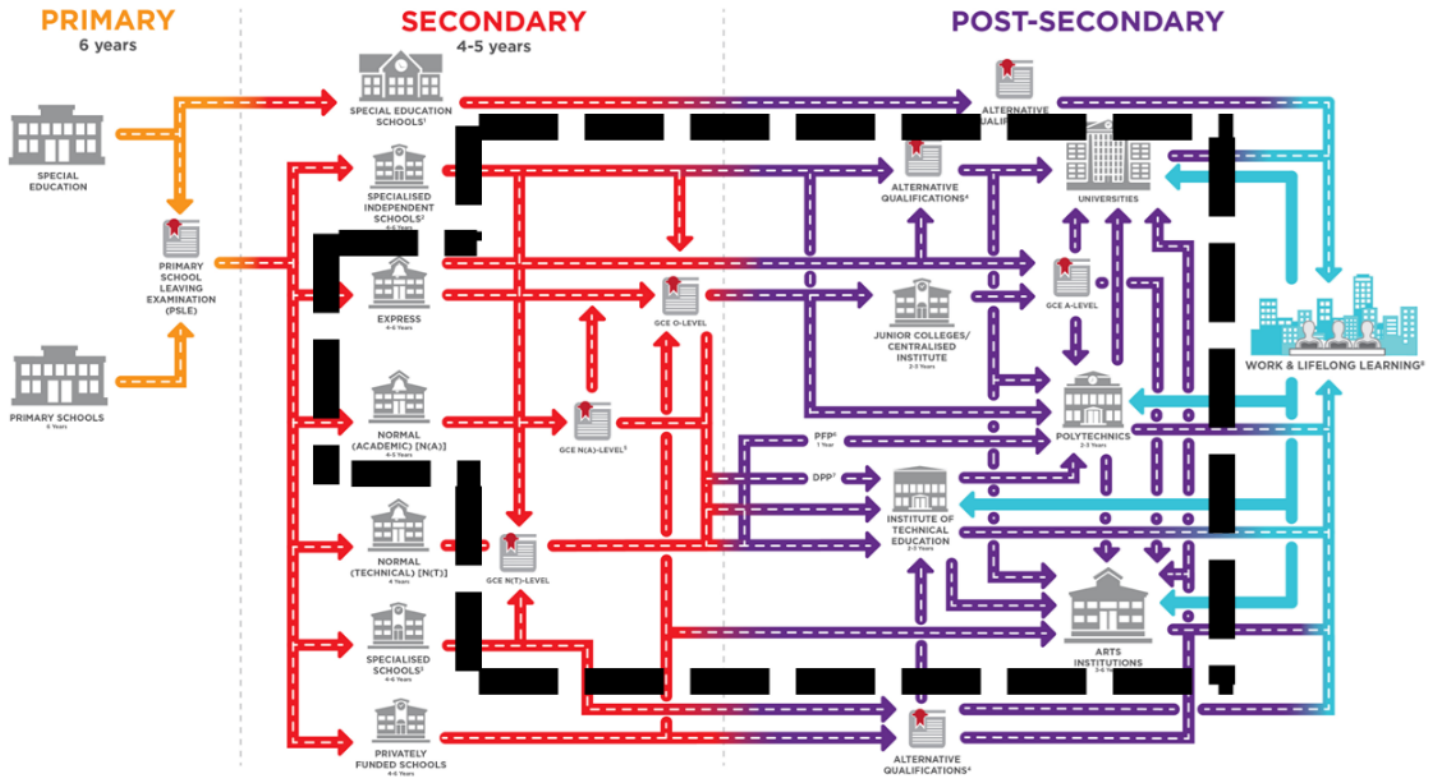
**Education & Career Guidance**



Kuo Chuan Presbyterian Secondary School



# Singapore's Education System: An Overview





# Supporting Your Child



## Questions Our Child May Have ...

### Subject Combination

Which Subject Combination should I take?



### I Don't Know

I don't know what I want to be yet, but I know I love Literature. How now?



### Education Pathways

Which Education Pathway should I choose?



### Career Aspiration

Do I know my career aspiration yet?



## Parents' Role in ECG...

### Facilitator / Supporter

I see myself as a facilitator and supporter instead of the "director" of my children's decisions

### Appreciate them for who they are

I recognise that my children are unique with their own values, interests, strengths, personality and skills.

### Belief in their growth

I believe that my children's abilities can grow through dedication and hard work.

### Appreciate all professions and contributions

I appreciate all professions and acknowledge their respective contributions to Singapore



# JC or Poly?



***Which is a suitable option to  
prepare your child for the  
future?***

**Answer?**

**Ask more questions!**



Kuo Chuan Presbyterian Secondary School



# How Can ECG Help Our Students?



Who am I?  
*Discovering Purpose*

Help students discover their

- Strengths
- Interests
- Values
- Personality
- Role in Community/Society

Where do I want to go?  
*Exploring Opportunities*

Help students

- Explore possibilities/pathways
- To be open-minded and be prepared for possible opportunities

How do I get there?  
*Staying Relevant*

Encourage students to

- Develop S.M.A.R.T goals and action plans
- Research on updated school information
- Consult trusted adults
- Continue to learn and grow



Polytechnic	Junior College/Millennia Institute
Specific area related to career aspiration where learning takes place in an <b>applied manner</b> with direct relevance between study and work.	In-depth study of a specific content area in academic studies that is more <b>conceptual and theoretical</b> .
<b>Work-ready</b> upon graduating with a diploma. May choose to <i>continue in university</i>	Graduate with A Levels/IBDP that <b>prepares one for university</b> (subject to meeting admission requirements)
More <b>self-directed learning</b> with lecturers as advisors.	Contains <b>Routine</b> of a school setting with teacher guidance.

Which course?  
**Which poly?**  
 What is the cut-off point?  
**Should I try for EAE?**  
 Am I ready to commit to a specific course/poly?

Which JC? A Levels or IBDP?  
**Should I take Arts or Science stream?**  
 What subject combination should I take in JC?  
**Should I try for DSA? What is my niche area?**  
 Am I ready to commit to a specific JC?

# JC or Poly?

**JC & Poly are viable options for routing into  
university education**

***6 Publicly-Funded Autonomous Universities***



# Alternative Pathways



**Post-Secondary Student**

2Y/3Y A-Level Programme

Junior College /  
Millennia Institute

International Baccalaureate  
Diploma Programme (IBDP)

IB Schools

Diploma Course

Polytechnic

2Y NITEC/ 2Y or 3Y Higher  
NITEC Course

ITE

Diploma Course

Arts Institution  
(NAFA/LASALLE)

*To check & apply via individual school website*

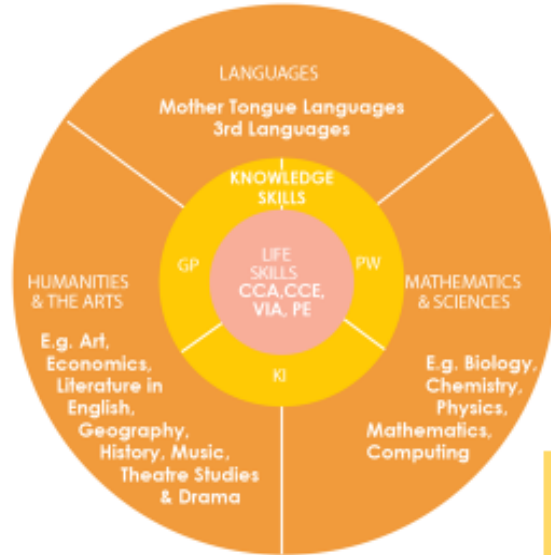


# 'A' Levels

1. Junior College (JC): L1R5 ≤ 20 (2-year course)
2. Millennia Institute (MI): L1R4 ≤ 20 (3-year course)



Scan to find out more about JCs @ MOE School Finder



Legend	
CCA	Co-Curricular Activities
CCE	Character & Citizenship Education
PE	Physical Education
GP	General Paper
PW	Project Work
KI	Knowledge & Inquiry
VIA	Values in Action

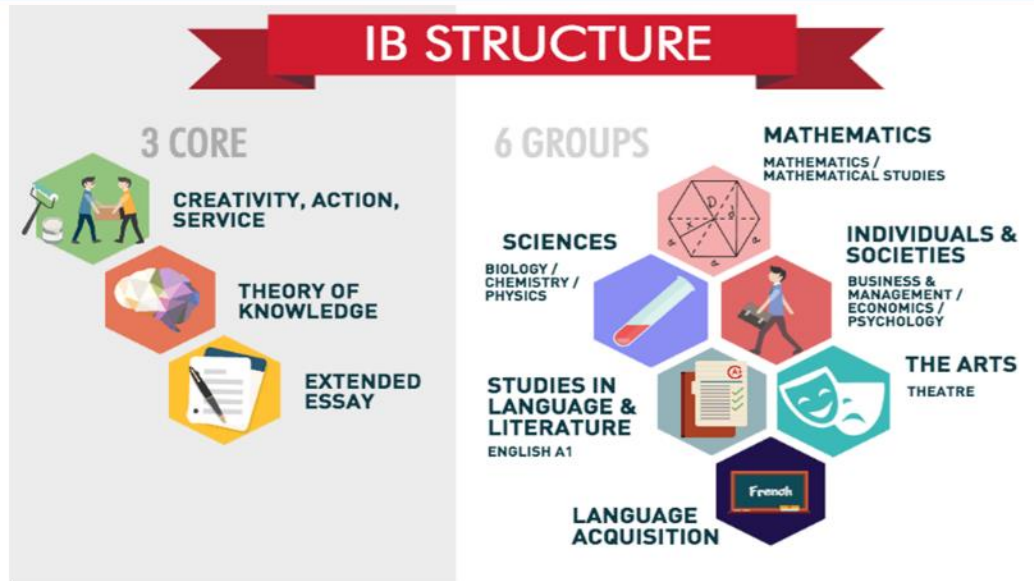
There are some subjects at 'A' level where students will have to meet the stipulated requirements taken at 'O' Level. *The requirements differ for each JC so please check the respective JC's website for details.*



Source: A-Level curriculum and subject syllabuses | MOE



# The International Baccalaureate Diploma Programme (IBDP)



**3 Core Subjects AND 3 Higher Level Subjects + 3 Standard Level Subjects**

Students will have to meet the stipulated requirements of some subjects and requirements may differ for each IB school. Please check the respective school's website for details.



Kuo Chuan Presbyterian Secondary School





# Polytechnic: Minimum Entry Requirement

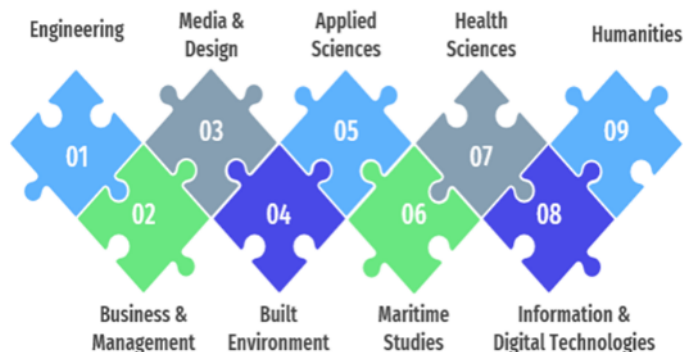


Scan to find out more  
about Polys @ MOE  
Course Finder

- Net ELR2B2 (English, Relevant 2, Best 2 Subjects)  $\leq 26$
- Meet the minimum entry requirements of preferred course
- Relevant Subjects (R2) vary from course to course

Subjects	English Language	Mathematics (Elementary/Additional)	Net ELR2B2
Grades	A1 to C6/D7*	A1 to C6/D7*	$\leq 26$

## Course Clusters in Polytechnic



esbyterian Secondary School



# ITE: Minimum Entry Requirement



Scan to access ITE  
Course Booklet 2024

2-Year Higher Nitec Courses at Institute of Technical Education (ITE) for O-Level						
Business & Services / Design & Media				Applied Sciences/ Architecture / Engineering / ICT		
(ELB4-A)		(ELR1B3-B)		(ELR2B2-C)		
EL	English Language	EL	English Language	EL	English Language	
B4	Best 4 other subjects (Excluding CCA)	R1	E Math/A Math/ POA	R2	1 <sup>st</sup> Subject	E Math/A Math
		B3	Best 3 other subjects (Excluding CCA)		2 <sup>nd</sup> Subject	Science <sup>^</sup> D&T
				B2	Best 2 other subjects (Excluding CCA)	

Note: To be eligible for admission to Polytechnics or ITE, students must also meet the minimum entry requirements (MER) of the course.  
<sup>^</sup> Science: Can be Combined Science or Pure Chemistry/ Physics/ Biology.



Kuo Chuan Presbyterian Secondary School



# N-Level Alternative Pathways

1. Poly Foundation Programme (PFP)
2. Direct-Entry-Scheme to Polytechnic Programme (DPP)
3. Institute of Technical Education (ITE)

	Polytechnic Foundation Programme (PFP)	Direct-Entry-Scheme to Polytechnic Programme (DPP)	Institute of Technical Education (ITE)	Nanyang Academic of Fine Arts (NAFA)
Aptitude Based Admission			EAE (3 choices)	
Merit Based Admission	PFP (5 choices)	JIE 'H' (12 choices)	JIE 'N' (12 choices)	Apply direct
Requirements	ELMAB3 ≤ 12	ELMAB3 ≤ 19	Best 4 N-level ≤ 20	ELMAB3 ≤ 15
Requirements	<b>Polytechnic</b> 1 year Foundation + 3 years Diploma	<b>ITE</b> 2 years + 10 weeks <i>Higher Nitec</i> ↓ GPA ≥ 2.5 or GPA ≥ 3.0 2-3 years Diploma	<b>ITE</b> 2 years <i>Nitec/Higher Nitec</i> ↓ ITE <i>Higher Nitec/ Poly/ Work Study</i> Diploma	<b>NAFA</b> 1 year Foundation + 3 years Diploma



ary School



# Admissions Pathways to ITE

## 'N' Level Results

*\* based on best 4 GCE 'N' level subjects, including subject prerequisite and bonus points*

## Early Admission Exercise (EAE)

*\* based on interest & passion, subject to interviews, aptitude tests & portfolio reviews*

**ITE**

## 2-Year Nitec Course:

- Focus on hands-on learning.
- Progress to Higher Nitec / Poly, ITE Tech Dip / Work Study Dip [subject to GPA requirements]

## 3-Year Higher Nitec

Selected courses from:

- Sch of Biz & Services &
- Sch of Electronics & Info-comm Tech

*Note: N(A) students who secured ITE EAE offers will still be eligible for DPP and PFP.*



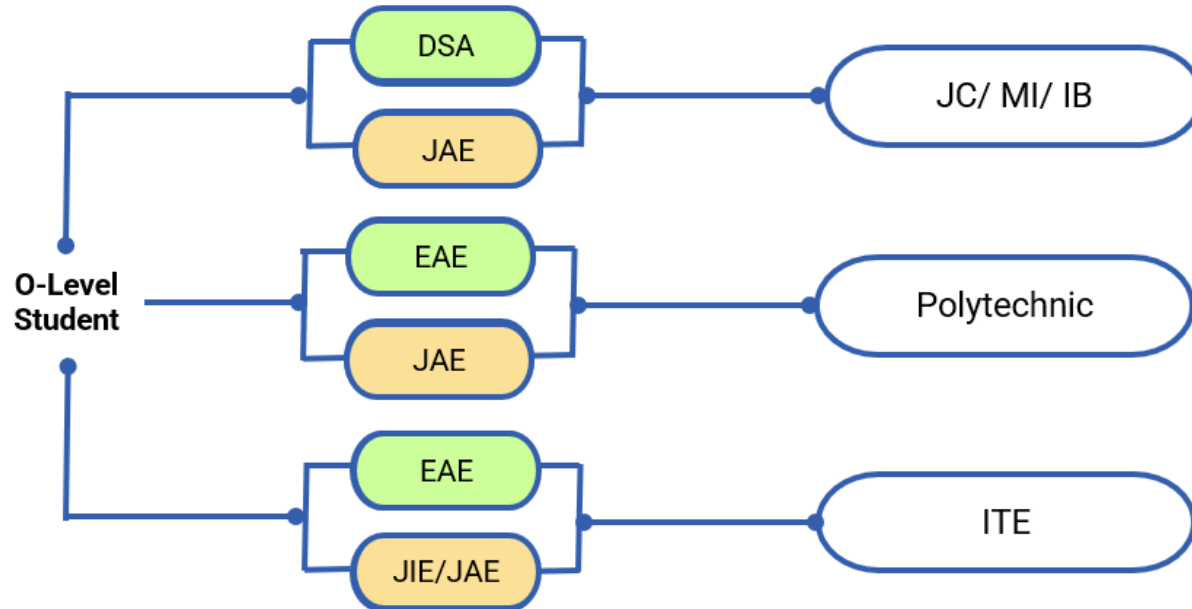
Kuo Chuan Presbyterian Secondary School



# 2 Types of Admission Exercises

**Aptitude-Based: DSA/EAE**

**Merit-Based: JIE / JAE**



Kuo Chuan Presbyterian Secondary School



# Aptitude-based Admissions

## Direct School Admissions (DSA) – JC

Allows students to apply to a DSA school **before** taking GCE O-Level examinations

Students can apply based on their **talent in sports, CCAs & specific academic areas**

Students will have to prepare specific **write-ups** and a **portfolio showcasing their accomplishments, skills and experiences**

**Interviews, aptitude tests and/or auditions** may be conducted as part of the assessment

## Early Admissions Exercise (EAE) – POLY/ITE

Allows students to apply for and receive conditional offers for admission to Poly/ITE **prior** to receiving their final grades

Allows Poly/ITE greater flexibility to select & admit students based on their **aptitude and interests**, apart from academic grades

Students will have to prepare specific **write-ups** and a **portfolio showcasing their accomplishments, skills and experiences**

**Interviews, aptitude tests and/or auditions** may be conducted as part of the assessment



# ECG Exploration



## Booking link:

<https://go.gov.sg/ecg-appt-mslisa-kcpss>

**Venue:** Aspiration Corner @ Library

**When:** Mondays and Wednesdays,  
8:30am to 5:00pm

**Email:** [lim\\_yin\\_leng\\_lisa@schools.gov.sg](mailto:lim_yin_leng_lisa@schools.gov.sg)

**Come chat with  
ECG counsellor Ms Lisa Lim**



**Kuo Chuan Presbyterian Secondary School**

# JOIN THE PSG



<https://go.gov.sg/kcpsp-psgmember-registration-form>



Kuo Chuan Presbyterian Secondary School





# Like, Share & Follow!



Follow us on our school's social media platforms:

- Instagram  
**@kuo\_chuan\_presbyterian\_sec**
- Facebook  
<https://facebook.com/KCPSShomepage>



**Kuo Chuan Presbyterian Secondary School**





**Kuo Chuan Presbyterian Secondary School**



Thank  
you!

The image shows the words "Thank you!" embroidered in a colorful, bubbly font on a blue denim fabric. The word "Thank" is on the top line and "you!" is on the bottom line. Each letter is filled with a different pattern or color: 'T' is red and white striped; 'h' is blue; 'a' is green and white striped; 'n' is pink and white polka dot; 'k' is yellow and white striped; 'y' is gold and white striped; 'o' is purple and white striped; 'u' is green and white striped; and the exclamation point is red. Surrounding the text are several decorative symbols: a small white swirl at the top center, a red heart to the right of "Thank", a yellow star to the left of "Thank", a red dot below the exclamation point, and another white swirl at the bottom right.